

EA 560-536



This likishi-mask from Congo differs from the others that we have. I am trying to find out why there are three heads instead of just one...

EA 560-1717



This 'doll' is a puzzle!!! It is supposedly a Chokwe used in boys' initiation rites, where the figure had to provide the boys with insight into the world of the ancestral spirits. It is 122 cm in height. Anyone who knows how this object is used and which spirit it represents???

EA 763-02



Here is another puzzle... All I have of info is that it is from Congo. The figure has to faces on each side. (see the next photo) Any info would be highly appreciated!



EA 560-1728



This mask is supposedly from the Bakete-tribe. Function?

EA 560-2326



This one is from the Yaka-tribe in Zaire. How and when is it used?

EA 560-2646. Mask



Ea560-2646

EA 560-2647. Mask



Ea560-2647

These two are supposedly BOBO-masks from Burkina Faso. But do they have any relation to ancestors or spirits?

EA 95-271

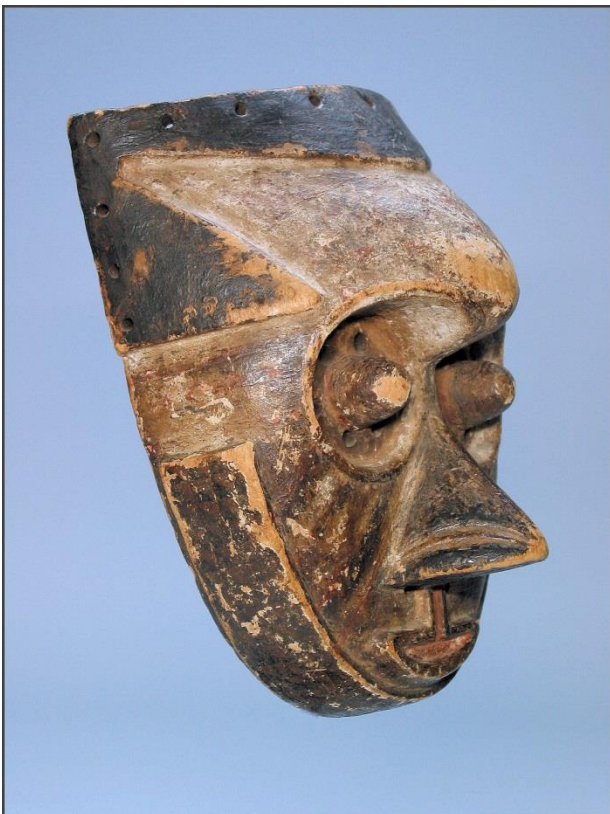


This one is from Nigeria. I wonder if it is a Montol figure, used in divination and healing rites by a secret men's society called 'komtin'. One of the functions is supposedly to facilitate communication with the lineage ancestors or spirit being...

EA 763-06



I found this one (below) on google - would that be the same?



Kuba *pwoom itok* mask,
Democratic Republic of the Congo
wood, pigment. Early to mid 20th
century, definite signs of age and
use. The *pwoom itok* mask was
part of the Kuba royal circle of
masks. It is a simple dance mask,
in most cases the
eyes are surrounded by small
holes and the mask would have
originally been attached to a more
elaborate headdress consisting of
feathers and raffia cloth. The
dancer who wears the mask plays
a wise, tired old man whom the
other dancers come to consult.

